

THYROID SPECT SCAN

Rat Study

REPORT

This document contains the results of Rat-Thyroid SPECT scan using HiReSPECT animal SPECT Imaging system

Persian Gulf Nuclear Medicine Research Center

November 12, 2013

PLANAR SCAN

Figure 1 indicates planar images of thyroid scan in 3 color mapping type. There is 2 kind of color interpolation For each color mapping type; "constant interpolation" and "bilinear interpolation". This option determines how color is interpolated within a slice. By default, constant interpolation is used. With constant interpolation individual pixels become visible. Bilinear interpolation often produces somewhat blurry results.

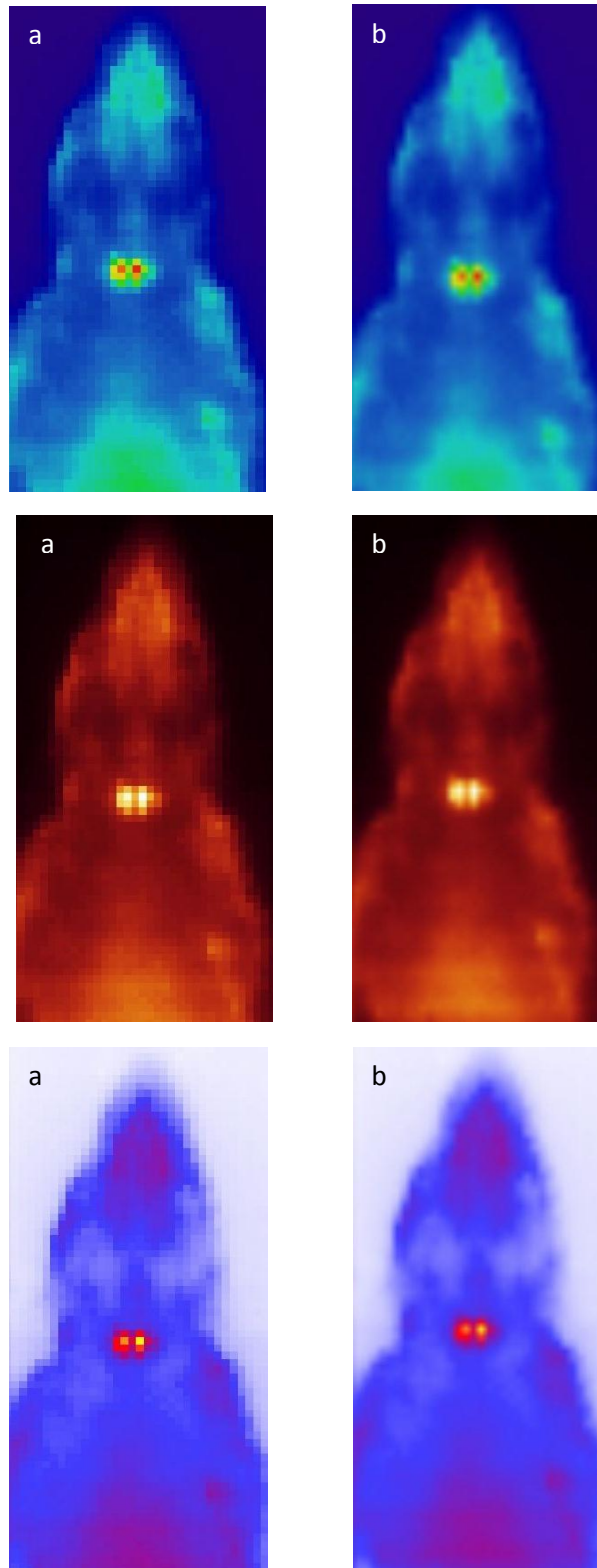


Figure1. Planar Thyroid scan, a: Constant interpolation, b: Bilinear interpolation

SPECT SCAN

Figure 2. shows 3d images of SPECT scan.

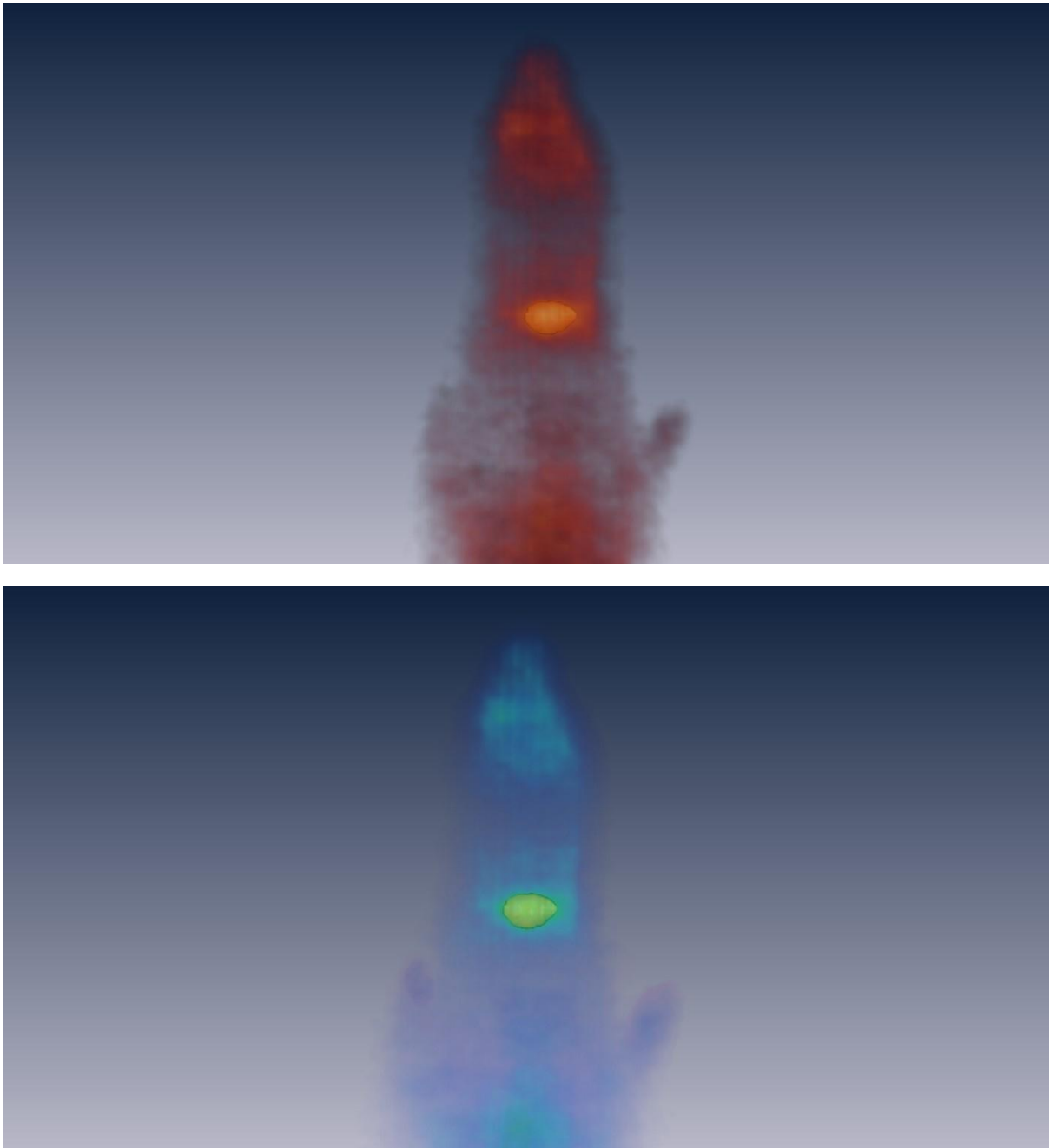


Figure2. 3D Image of Thyroid scan