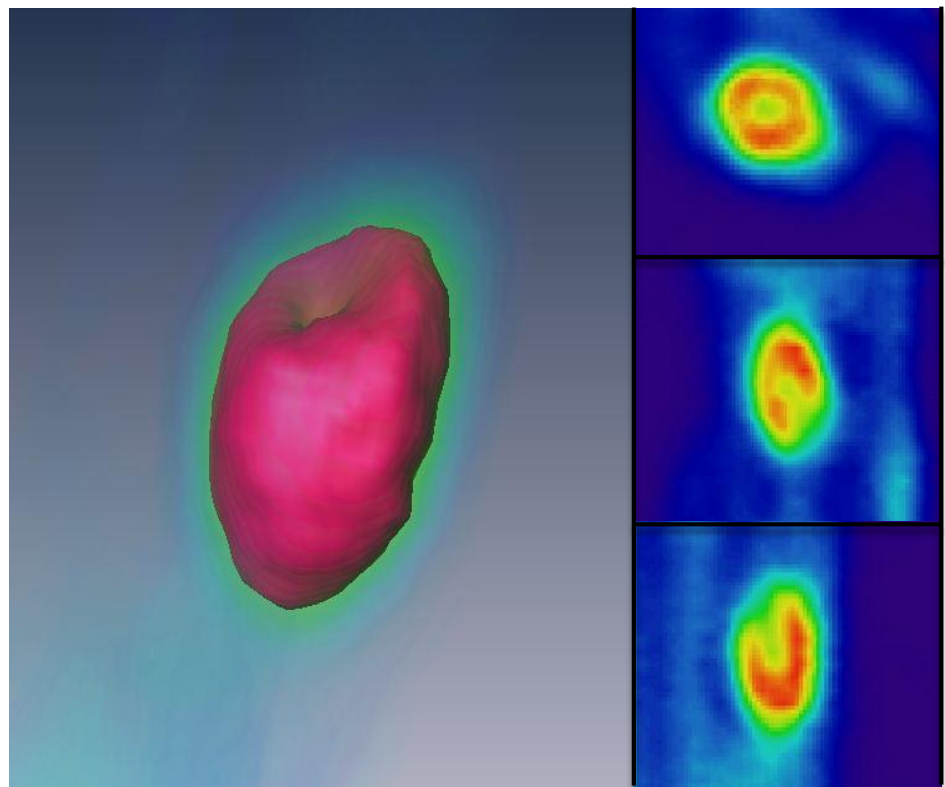


CARDIAC SPECT



Rat Study

Persian Gulf Nuclear Medicine Research Center

This document is a report on Rat-Cardiac SPECT scan using
HiReSPECT animal SPECT imaging system.

November 10, 2013

Cardiac SPECT

PERSIAN GULF NUCLEAR MEDICINE RESEARCH CENTER

Scan Parameters:

Radius of Rotation (ROR)	50 mm
Scan Type	360 degree per head
Scanning Time per View	60 sec
No. of Views	60 views for each head
Decay Compensation	yes

Dual Head SPECT scan was performed with above options to scan the Rat's Heart. The images obtained from Amira® software platform. Figure 1 shows 3D image of Rat's heart containing Isosurface display, axial, coronal and sagittal surfaces.

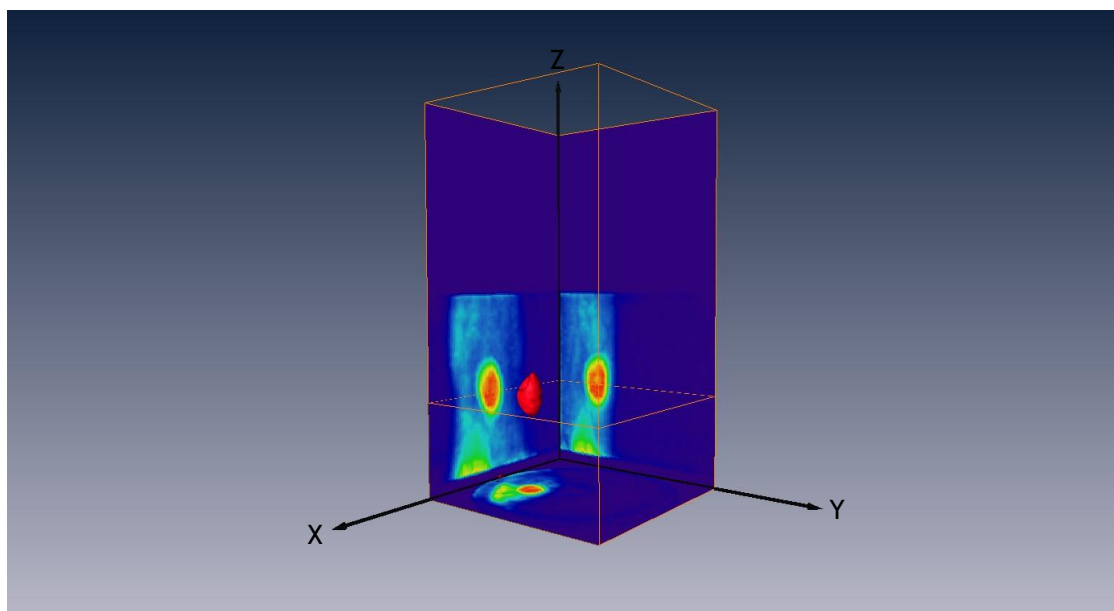


Figure 1. 3D display (XY: Axial, XZ: Coronal, YZ: Sagittal view)

Figure 2 indicates scan results for axial, coronal and sagittal views including several slices from one side of the heart to the other side.

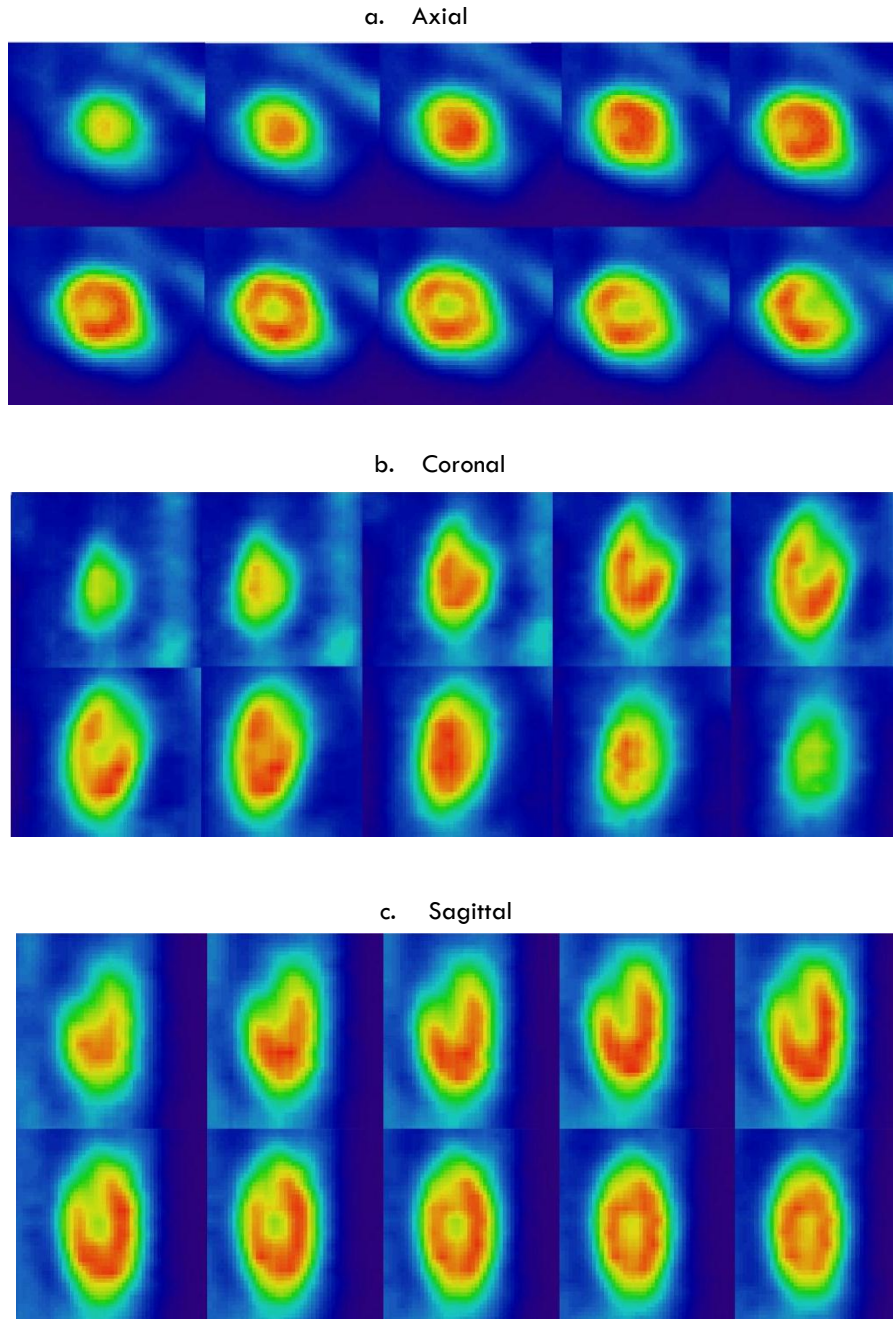


Figure 2. SPECT results for Axial (a), Coronal (b) and Sagittal (c) views